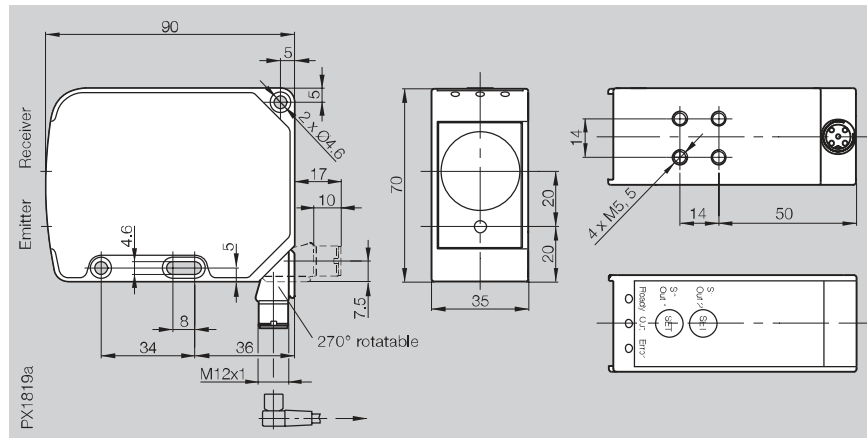


When traditional sensing methods reach their technological and economic limits, the **BOD 63M** steps in:

- for detecting small objects over long distances
- in difficult environments such as high temperatures
- in robot cells

The BOD 63M in its rugged metal housing has a working range of 200...6000 mm. Its data are sent in IO-Link mode. This makes setup and operation extremely easy: Two teach-in buttons are provided for initiating startup. Directly from the controller you set both switching points, turn the laser off and disable the buttons.

Series	BOD 63M
Output signal	IO-Link
Working range	200...6000 mm
Measuring range	5800 mm



Distance Sensor	PNP	BOD 63M-LI06-S4
Electrical		
Supply voltage U_s		18...30 V DC
No-load supply current I_0 max.		≤ 90 mA
Settings		Teach-in
Switch points		2
Optical		
Emitter, light type		Laser, red light
Wavelength		660 nm
Laser Class		2
Light spot diameter		5 mm at 3 m 10 mm at 6 m
Resolution		≤ 2 mm
Gray value shift		≤ 1,5 %
Repeat accuracy		≤ ±4 mm
Temperature drift		≤ 2 mm/°C
Linearity		±1%
Switching hysteresis		≤ 15 mm
Time		
Turn-on/turn-off delay		≤ 3,4 ms
Ready delay		≤ 20 ms
Frequency of operating cycles f		≥ 150 Hz
Indicators		
Power indicator		LED green
Output function indicator		LED yellow
Stability indicator		LED red
Mechanical		
Dimensions		90×70×35 mm
Connection type		M12 connector, 4-pin
Housing material		Anodized aluminum
Optical surface		Glass
Weight		270 g
Ambient		
Enclosure rating per IEC 60529		IP 65
Polarity reversal protected		yes
Short circuit protected		yes
Ambient temperature range T_a		-10...+60 °C
Permissible ambient light		≤ 10 kLux
IO-Link		
Mode		COM 2
Baud rate		38,4 Kbaud
Value range		00C8 H...1770 H
Diagnostics		Stability indicator
Parameters		Switch points, laser on/off, button disable



→ Connector orientation